

HYDRA BIO BLOCK



Slowly Dissolving Bacterial Enzyme Block



HYDRA®

Features & Advantages

- ◆ Uses natural, safe bacteria to digest and consumes grease and FOGs.
- ◆ Contains natural growth enhancers & bio-stimulants to maximise bacterial action.
- ◆ Significantly reduces malodours (Hydrogen sulphide) and FOG (fats, oils and grease) deposits.
- ◆ Reduces effluent COD/BOD levels by up to 80%.
- ◆ Treats lift stations, wet wells and manholes continuously 24/7 maintenance.
- ◆ Bacteria keep working on waste after leaving the lift station.
- ◆ Reduces corrosion and wear in pumps and equipment.
- ◆ Excellent for low flow lines or upstream from 'Hot Spots'.
- ◆ Lasts for up to 6 weeks, automates waste water treatment.
- ◆ Produces abundant amylase, protease, lipase, cellulose, dioxygenase, and pentosanase primary enzymatic activity.
- ◆ Contains natural nutrients for bio stimulation and growth enhancement.

The Problem



The build up of fats, oils and grease (FOG's) from domestic and commercial kitchens in drains and sewers is a big issue. It causes:

- ◆ Blockages and foul odours in drainage systems.
- ◆ Environment Pollution and flooding.
- ◆ Health & safety issues.
- ◆ And is expensive and messy to rectify.



A treatment is needed that will deal effectively with FOG's from waste water applications and prevent blockages in drains and sewers.

Grease Traps : The first place that FOG's build up in kitchens, is the grease traps. Waste water from domestic and commercial kitchens, particularly those that contain high levels of grease and fat enter the trap where they solidify allowing FOG free water to flow freely out into the sewage system.

However, without proper treatment & maintenance, grease traps can become blocked and overflow.



Wet wells : Wet wells and lift stations are designed to handle sewage that is fed from underground gravity pipe-lines. They move raw sewage to higher elevations which otherwise wouldn't be possible, which can severely impair sewage processing.

These set ups are particularly vulnerable to becoming blocked with FOG's which can severely impair sewage processing.

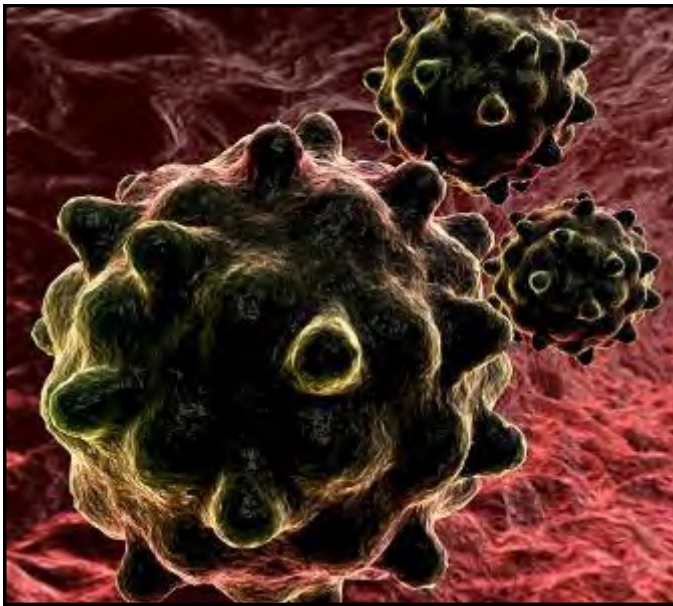
The Solution

Hydra Bio-Block is a solid, bacteria-laden organic block for use in degrading organic waste.

The safe, enzyme-producing bacteria (non-pathogenic) are pre-sent in sufficiently high numbers to handle difficult organic problems.

The unique Hydra Bio-Block will gradually dissolve over a 6-8 week period which allows for continuous treatment of waste in grease traps, sewer lines, lift stations, wet wells, grease traps and other waste water applications where a heavy build up of grease occurs.

The bacteria will begin to work downstream, consuming the grease and fats as they go.



Microbiological Information

Multiple strains of selected Facultative anaerobes (growth with or without oxygen).

All microorganisms are Class 1 ATCC organisms, Non-pathogenic, Spore Forming and Vegetative cells. Certified Salmonella Free.

Produces abundant amylase, protease, lipase, cellulase, dioxygenase, and pentosanase primary enzymatic activity.

Contains natural nutrients for bio stimulation and growth enhancement.

How To Use

- ◆ Clean system first (use twice the recommended amount if you are unable to clean system first).
- ◆ Add Hydra Bio Block directly to area being treated.
- ◆ Do not place the block directly into the flow of incoming water.
- ◆ Select a less turbulent area of the grease trap, but not a dead spot.
- ◆ Always suspend the block by a rope so it is not washed away and is always submerged in water, but NOT on the bottom of the tank or pipeline.
- ◆ Check blocks every 2-4 weeks.
- ◆ Install another block when the block has degraded by 50-60% to ensure sufficient bacterial dosing.

Dilutions & Applications

Application	Volume and Block Size	Volume and Block Size
Grease Trap (per chamber)	<200 litre - 500g	<600 litre-1kg
Septic Tank & Bio System	<3,000L - 500g	<10,000L 2.5-5kg
Lift Stations / Wet Wells	<100m ³ day - 2.5 kg	<500m ³ day - 5 kg
Manholes / Mains	Small - 500g	Large - 2.5 kg

Laboratory Facilities

Hydra International Ltd.'s Research & Development Laboratories are a hub of activity where new products are developed and formulated. We have working relationships with our raw material suppliers, many of these suppliers are major world-wide chemical manufacturers with their own development laboratories.

As a company we are well known in the chemical industry for being receptive to cutting edge new chemicals which can be incorporated into our products to achieve performance advantages. An important part of the International Standards that we hold is that of constant improvement. We show that we have achieved this at every independent audit.



Hydra International Limited

8 Carters Lane, Kiln Farm, Milton Keynes MK11 3ER, U.K.

+44 (0)1908-265889 | sales@hydra-int.com

www.hydra-int.com

